

AVAILABLE IN  
TWO FORMATS

## A FULL RANGE OF EYE CARE

A natural way to help keep your eyelids and eyelashes  
clean, comfortable and healthy

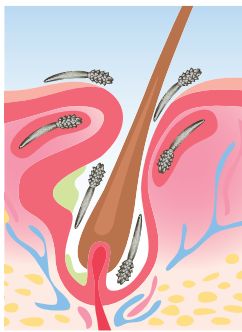


**NOVAX**<sup>®</sup>  
PHARMA

NAVIBLEF® is an innovative range of **foams** and **wipes** designed for daily and intensive care of eyelids and eyelashes. Recommended to remove ocular secretions caused by allergic and inflammatory conditions associated with:

- Demodex,
- Blepharitis and blepharo-conjunctivitis,
- Meibomian gland dysfunction (MGD),
- Rosacea,
- Burning, itchiness or irritation,
- Redness, swelling and other eyelid margin diseases on the face.

## DO YOU KNOW DEMODEX?



**Demodex mites (Demodex folliculorum and Demodex brevis) are the most common ectoparasites infesting the pilosebaceous unit of the skin.** Uncontrolled Demodex infestation (demodicosis) has been implicated in several diseases of the skin, including rosacea, with papulopustular skin lesions and perifollicular inflammatory infiltrate.

Often, once demodicosis occurs on the face, it can spread and flourish on the eyelids and eyelashes. In case of abundant secretions and residues, a daily use of Naviblef is recommended.

**Demodex (eyelid mites), which is a commonly overlooked cause of ocular inflammation, may be linked to many ocular conditions such as blepharitis.** In the morning, it can result in symptoms including itching and irritation because of the eyelid mites' aversion to light.

At night, Demodex mites are active and come out to mate and lay their eggs onto the lashes. Then, in the morning, mites crawl back into the follicle, causing the patient to itch. The diagnosis of Demodex is very challenging. Not only does it often go unnoticed but it can also be rendered even more difficult in situations where patients with a heavy infestation are asymptomatic despite having "a lot of Demodex".

**In some other instances patients may develop an allergy to the Demodex mites causing severe itching and inflammation, which can interfere with the diagnosis.**

## WHAT IS BLEPHARITIS?



**Blepharitis is a common chronic condition that causes inflammation of the eyelids.** It leads to red rimmed, sore eyes, sometimes with crusting at the roots of the eyelashes, and tearing.

Blepharitis can also lead to the development of tear film problems: abnormal or decreased oil secretions that are part of the tear film can result in excess tearing or dry eye. Because tears are necessary to keep the cornea healthy, tear film problems can make people more at risk for corneal infections.

**Blepharitis can be caused by Demodex (which is an etiologic factor in chronic blepharitis).** In fact, a Demodex infestation is found in 30% of patients with chronic blepharitis. In addition, conjunctival inflammation, meibomian gland dysfunction and concomitant bacterial infections can also lead to the development of Blepharitis symptoms.

**The condition can be difficult to manage because it tends to recur, as such a regular cleansing regime can help in managing symptoms.**

## RESULTS OF DEMODEX INFESTATION



68 %

of patients over the age of 60 reported some discomfort from blepharitis and meibomian gland dysfunction<sup>(4)</sup>

## SYMPTOMS AND SIGNS OF BLEPHARITIS

- Lid-margin inflammation or redness,
- Collarettes around the base of each eyelash,
- The thickening and cloudiness of the clear oil of the meibomian glands,
- Lash loss,
- Complaints of itching or a tickling sensation around or on the eyelids,
- And the presence of Demodex mites.

## DURATION

- Patients must understand that long-term lid hygiene is required as Demodex is a chronic condition requiring chronic therapy.
- The daily maintenance of the eyelid's hygiene with **Naviblef® Daily Care** is recommended to daily remove secretion from the eyelids and eyelashes.

## THE MANAGEMENT OF DEMODEX INFESTATIONS

The management includes a combination of :

- **Naviblef® eyelid Wipes** and
  - **Naviblef® Intensive Care** cleansing foam
  - and with **Naviblef® Daily Care for the Maintenance** and cleansing regimen
- } for periods of 4 weeks

Patients with Demodex are typically prescribed an eyelid cleanser such as **Naviblef® Intensive Care** for the first phase of attack and for the maintenance **Naviblef® Daily Care**, that contain Tea Tree Oil.

## ADVICES FOR YOUR PATIENTS

- Cleanse the eyelids and eyelashes with **Naviblef® Foams**.
- Use **Naviblef® Wipes** that contains **Terpinen-4-ol** on their eyelashes, forehead, eyebrows, and cheeks as the mites live in all of those areas.



## ATTACK



**naviblef®**  
INTENSIVE CARE

## MAINTENANCE



**naviblef®**  
DAILY CARE

### DESCRIPTION AND INDICATIONS

**Naviblef® Intensive Care** is indicated for the **hygiene and mechanical removal of severe ocular secretions and debris from eyelashes and eyelids**. These symptoms can be caused by inflammatory conditions resulting from blepharitis and blepharo-conjunctivitis, presence of bacteria or Demodex (eyelid mites), dry eyes, contact lens wearing or ocular surgery.

Through the mechanical action of the product, **Naviblef® Intensive Care** can help **reduce the risk of infection before and after ocular surgery caused by bacteria and/or Demodex present on eyelids and eyelashes**.

### PROPERTIES

**Naviblef® Intensive Care** is a non-greasy and non-irritant formulation, **for topical use**.

### COMPOSITION

D-Panthenol, Aloe Vera, Taurine, **Melaleuca Alternifolia (Tea Tree Oil)**, Anthemis Nobilis (Camomile E.O.), Aroma Camomile and purified water.

### DESCRIPTION AND INDICATIONS

Maintaining a daily eyelid and eyelashes hygiene with **Naviblef® Daily Care** provides many benefits including the **reduction of dry, scratchy or irritated eyes symptoms**.

**Naviblef® Daily Care** effectively **removes excess oil, pollen and other debris from the eyelids** which increase the risk of irritation and blepharitis due to the presence of Demodex (eyelid mites), bacterial infestations or dry eye symptoms.

**Naviblef® Daily Care** is recommended to be used a maintenance care, and for patients who have followed the attack phase with **Naviblef® Intensive Care**.

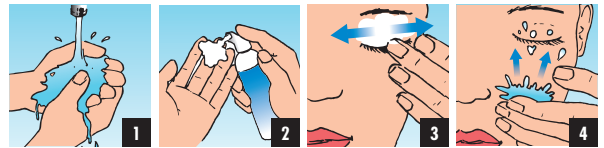
### PROPERTIES

**Naviblef® Daily Care** is a non-greasy and non-irritant formulation, **for topical use**.

### COMPOSITION

**Melaleuca Alternifolia Oil (Tea Tree Oil)**, Anthemis Nobilis Oil (Camomile oil), D-Panthenol, Allantoin, Taurine, and purified water.

## DIRECTIONS FOR USE



- 1- Before the application of the foam, wash your hands and then clean your fingertips with the appropriate **Naviblef® Foam** to be applied.
- 2- Press the delivery pump and place the foam on your clean fingertips. When used before or after surgery it is recommended to place the foam on sterile gauze.

### IF YOU USE NAVIBLEF® INTENSIVE CARE :

- 3- Close the eye and massage the eyelid and eyelashes with **Naviblef® Intensive Care**. Do not touch or open the eyes during the application. Let the foam dry before opening your eyelid to avoid the product entering the eye. Leave the product on for 3-5 minutes.

**REPEAT THIS TREATMENT 2 - 3 TIMES A DAY FOR A PERIOD OF 7 TO 14 DAYS, FOR MAXIMUM EFFICACY.**

### IF YOU USE NAVIBLEF® DAILY CARE :

- 3- Close the eye and massage the eyelid and eyelashes with **Naviblef® Daily Care**. Do not touch or open the eye during the application. Leave the foam for approximately 60 to 80 seconds.

**REPEAT THIS TREATMENT 2 - 3 TIMES A DAY FOR LONG-TERM MAINTENANCE AND GOOD HYGIENE OF EYELIDS AND EYELASHES.**

- 4- After each application of either **Naviblef® Daily Care** or **Naviblef® Intensive Care** rinse the eyelids and eyelashes with warm water.

**Note: Repeat the same steps for the other eye. It is recommended that patients with Demodex wash their hair using a tea tree oil shampoo.**

## EYELIDS HYGIENE & DEMODEX INFESTATION



**naviblef®**  
WIPES

### DESCRIPTION AND INDICATIONS

**Naviblef® WIPES** is a formulation recommended for the **removal of ocular secretions and debris of eyelids and eyelashes** caused by allergic and inflammatory conditions associated with Demodex, blepharitis, blepharo-conjunctivitis, meibomian gland dysfunction (MGD), rosacea, burning, itchiness, irritation, redness swelling and other eyelid margin diseases. It can also be used for post-cataract surgery.

### PROPERTIES

For external use only **Naviblef® WIPES** recommended usage frequency.

According to severity of infestation : Mild to Moderate: 1-2 times a day for 6-10 weeks. Moderate to Severe: 2-3 times a day for 10-12 weeks. **Naviblef® WIPES** can be used warm or cold depending on the symptoms; warm for conjunctivitis, cold as decongestant in case of suppuration or inflammation of the eyelids (see leaflet).

### COMPOSITION

**Terpinen-4-ol**, Sodium Hyaluronate and Aloe Vera.

## DIRECTIONS FOR USE

CLOSE YOUR EYES DURING APPLICATION, LET THE SOLUTION DRY UP BEFORE OPENING THE EYES (1 minute).

- 1- Prior to opening, wash, rinse and dry your hands and face.
- 2- Tear open the aluminum sachet, then remove and unfold the wipe.
- 3- Close your eyes tightly and gently wipe the lids using side to side motion for approximately 30 seconds or dab the wipe on the affected area. The solution helps to inhibit the growth of the pathogens, not the scrubbing action. Scrubbing in certain cases may cause patient discomfort.
- 4- Keep the eyes closed for 1 minute to allow the treated surface to dry.
- 5- For optimum results do not wash off the dried formulation immediately. Wait 5-10 minutes before rinsing with clean running water.
- 6- Once finished cleaning the first eyelid, use the opposite side of the wipe to repeat the whole process on the opposite eye.

**NB: On application, the patient may feel a cooling and itching sensation that will disappear after 1 or 2 minutes.**

## ATTACK

## MAINTENANCE

## EYELIDS HYGIENE & DEMODEX INFESTATION



# A COMPLETE RANGE TO CARE FOR YOUR EYELIDS AND EYELASHES IN CASE OF BLEPHARITIS AND DEMODEX INFESTATION



2 formats : foams and wipes

**In a convenient travel format compatible with a busy lifestyle**

- ✓ **GOOD OCULAR TOLERABILITY\***
- ✓ **NO ALTERATION TO THE PALPEBRAL SKIN**
- ✓ **NO ALTERATION TO THE CONJUNCTIVAL MUCOSA**

Novax Pharma clinically tested the medical device NAVIBLEF® INTENSIVE CARE in order to assess its ocular tolerability when used in the eye area. A clinical evaluation was conducted on 20 healthy patients without medical contraindication. Patients used the product after closing the eyes, massaging it on the eyelids and eyelashes once every 2 days for a period of 14 days. During this period, the conjunctival and palpebral skin of patients were assessed. The observations were the following: NO SIGNIFICANT UNDESIRABLE EFFECTS, NO ALTERATION TO THE PALPEBRAL SKIN, NO ALTERATION TO THE CONJUNCTIVAL MUCOSA. According to the observed clinical scores collected from the clinical evaluation, NAVIBLEF® INTENSIVE CARE has proven to have good ocular tolerability: no significant undesired effects, alterations to the palpebral skin and conjunctival mucosa.

\* Mild irritation occurred in 2 patients after application but this cleared after a few minutes with no other effects observed.

### BIBLIOGRAPHY

- (1) Pathogenic Role of Demodex (2010), Liu, Scheffer, Tseng.
- (2) Review of Ophthalmology®: Blepharitis Diagnosis Don't Forget Demodex (2012), M. Stephenson.
- (3) Facts About Blepharitis | National Eye Institute <https://nei.nih.gov/health/blepharitis/blepharitis>
- (4) The role of omega-3 dietary supplementation in blepharitis and meibomian gland dysfunction. Trans Am Ophthalmol Soc 2008;106:336-356 Macsai M.
- (5) Demodex blepharitis: clinical perspectives, Stephanie R Fromstein, Jennifer S Harthan, Jaymeni Patel, and Dominick L Opitz.
- (6) Hypersensitivity test - Novax Pharma internal data.
- (7) Skin irritation test - Novax Pharma internal data.
- (8) Cytotoxicity test - Novax Pharma internal data.
- (9) Tolerability test - Novax Pharma internal data.

Navibler® Intensive Care  
Navibler® Daily Care



Navibler® WIPES 0051



NOVAX® PHARMA  
Le Coronado  
20, Av. de Fontvieille  
MC 98000 MONACO  
[www.novaxpharma.com](http://www.novaxpharma.com)